



REGIONAL SPECIALISED METEOROLOGICAL CENTRE -TROPICAL CYCLONES, NEW DELHI TROPICAL WEATHER OUTLOOK

DEMS-RSMC TROPICAL CYCLONES NEW DELHI DATED 07.07.2025

TROPICAL WEATHER OUTLOOK FOR THE NORTH INDIAN OCEAN (THE BAY OF BENGAL AND THE ARABIAN SEA) VALID FOR THE NEXT 168 HOURS ISSUED AT 0600 UTC OF 07.07.2025 BASED ON 0300 UTC OF 07.07.2025.

BAY OF BENGAL:

Yesterday's **low pressure area** over Gangetic West Bengal & neighborhood moved west-northwestwards and lay over southwest Gangetic West Bengal & neighborhood at 0300 UTC of today, the 07th July 2025. The associated cyclonic circulation extended upto 7.6 km above mean sea level tilting southwestwards with height. It is likely to move slowly west-northwestwards across Jharkhand and north Chhattisgarh during next 2 days.

Scattered to broken low and medium clouds with embedded intense to very intense convection lay over north & adjoining central Bay of Bengal and north Andaman Sea. Scattered low and medium clouds with embedded moderate to intense convection lay over the rest of the Bay of Bengal and South Andaman Sea.

*PROBABILITY OF CYCLOGENESIS (FORMATION OF DEPRESSION) DURING NEXT 168 HRS:

24 HOURS	24-48 HOURS	48-72 HOURS	72-96 HOURS	96-120 HOURS	120-144 HOURS	144-168 HOURS
NIL	NIL	NIL	NIL	NIL	NIL	NIL

***NOTE: EVERY 24HR FORECAST IS VALID UPTO 0300 UTC (0830 IST) OF NEXT DAY**

ARABIAN SEA:

Scattered low and medium clouds with embedded moderate to intense convection lay over east Arabian Sea, Lakshadweep Islands area, Maldives and Comorin area. Scattered low and medium clouds with embedded weak to moderate convection lay over the rest of the Arabian Sea.

*PROBABILITY OF CYCLOGENESIS (FORMATION OF DEPRESSION) DURING NEXT 168 HRS:

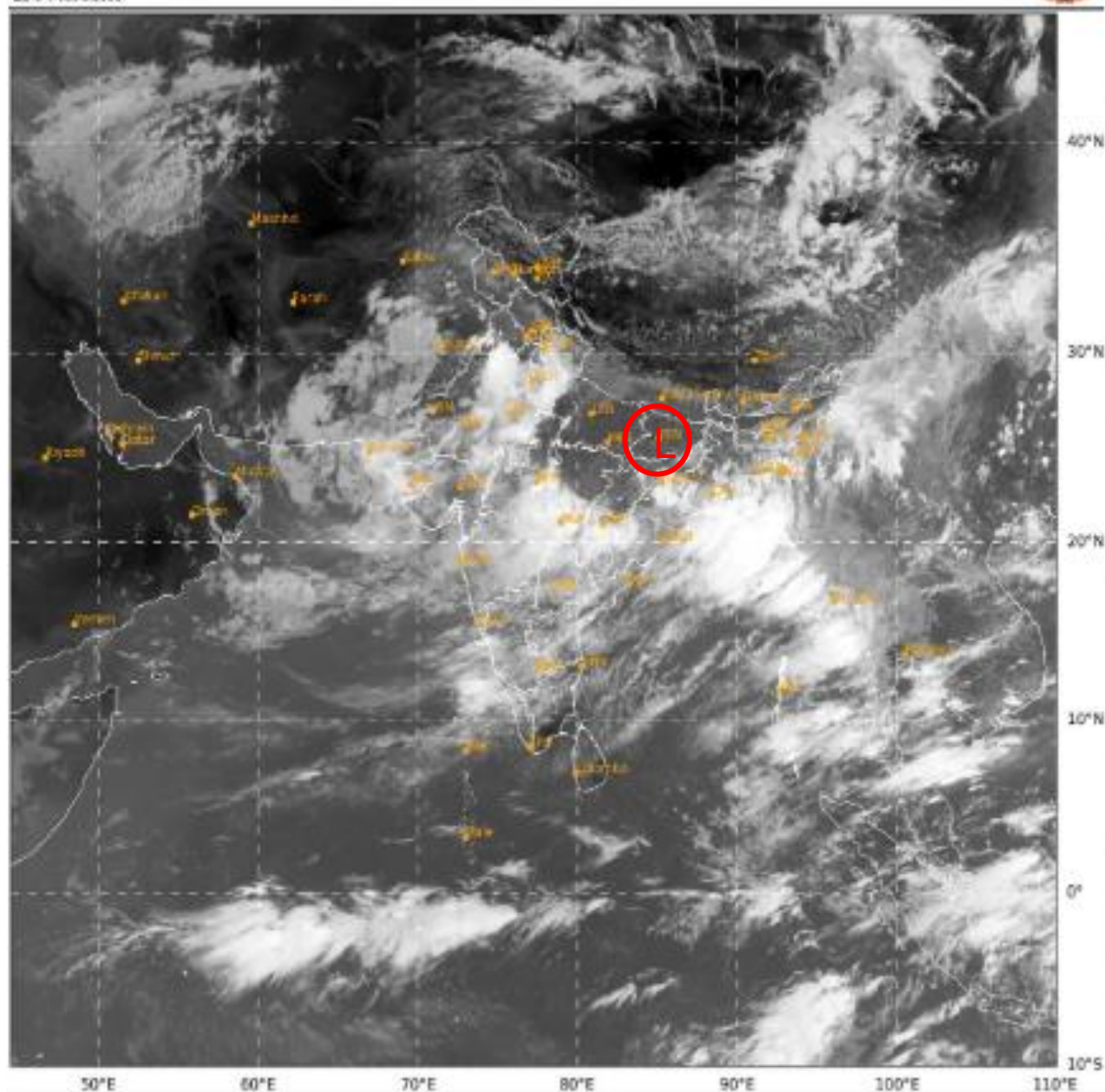
24 HOURS	24-48 HOURS	48-72 HOURS	72-96 HOURS	96-120 HOURS	120-144 HOURS	144-168 HOURS
NIL	NIL	NIL	NIL	NIL	NIL	NIL

***NOTE: EVERY 24HR FORECAST IS VALID UPTO 0300 UTC (0830 IST) OF NEXT DAY**

REMARKS: NIL

SAT : INSAT-3DR IMG
 IMG TIR1 10.8 um
 LIC Mercator

07-07-2025(0510 to 0541) GMT
 07-07-2025(1040 to 1111) IST



L: Low Pressure Area

Cloud distribution: (a) Isolated: <25%, Scattered:25-50%, Broken: 51-75%, Solid:>75%, Convection Intensity: (a) Weak: Cloud Top Temperature(CTT)>-25°C,(b)Moderate:CTT:-25°Cto-40°C,(c)Intense:CTT: -41°Cto -70°Cand(d)Very Intense::Less than -70°C
 PROBABILITYOFCYCLOGENESIS(FORMATIONOFDEPRESSION):NIL:0%,LOW:1-33%,MODERATE:34-66%ANDHIGH:67-100%
 ThisisaguidanceBulletinforWMO/ESCAPPanelMembercountries.VisitrespectiveNationalwebsitesforCountryspecificBulletins